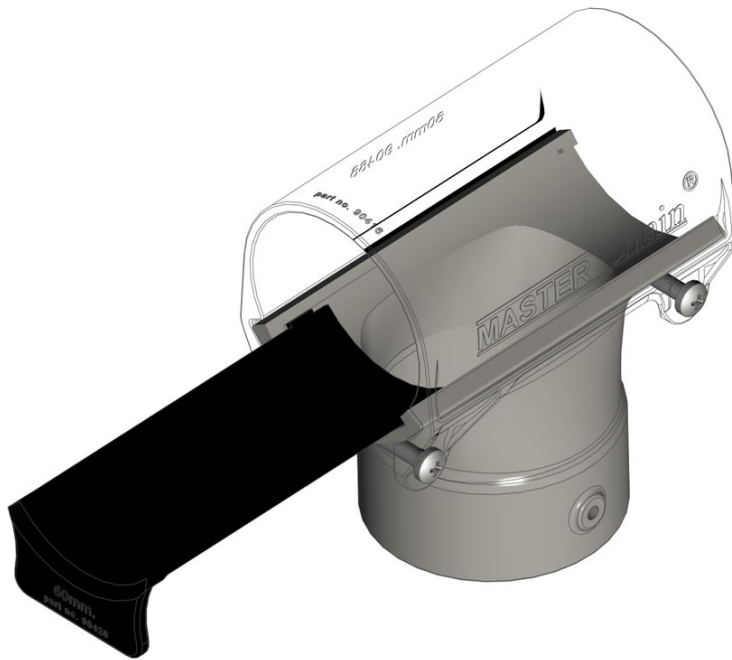


# MASTER Chain® - feed outlet



**No feed remains  
- no development of microbes**

The shutter is half-round and fits tightly to the feed tube. When the shutter is closed, no feed remains will accumulate, which may affect the pigs health. Furthermore, bridging is prevented.

**Watertight construction**

The feed outlet consists of an upper part and a lower part. The upper part overlaps the lower part and fits tightly. The design counteracts penetration of moisture when washing and the feed will always stay dry.

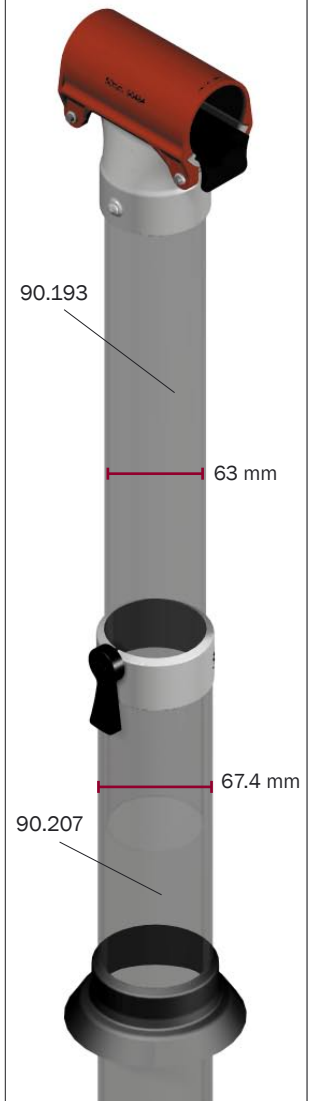
**Tight clamping on feed tube**

Clamping is to be done below the feed tube. It makes the assembling easier and this way of clamping makes it possible to clamp the outlet completely tight - also on undersized tubes.

**Effective feed draining**

The lower part of the outlet is oval and shaped in a way which makes it possible to drill more holes or cut a slot in the feed tube. This ensures a quick and effective draining of feed.

## examples

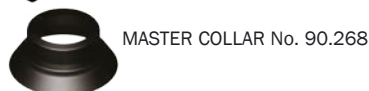
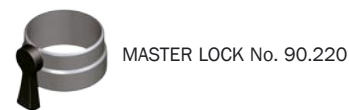


**Telescope drop - no penetration of water**

The upper part of the feed drop is made of 63 mm transparent plastic. The lower part is 67.4 mm.

The parts are clamped by the new **MASTER LOCK** clamp, which fixes the tubes, seals and prevents penetration of water.

The passage from the feed drop to the feeder is tightly closed with our **MASTER COLLAR**, a collar in soft plastic.



**MASTER Chain® FEED OUTLET**

No.	Description
90.482	Feed outlet 38 mm complete
90.484	Feed outlet 50 mm complete
90.486	Feed outlet 60 mm complete
90.220	MASTER LOCK clamp
90.268	MASTER COLLAR
90.211	Y-tubes 63 mm 60 degrees
90.207	Plastic tubes 67.4 x 1000 mm
90.193	Plastic tubes 63 x 1000 mm

